

# SANDPIPER SCOTTSDALE NO. 2 AMENDED

A SUBDIVISION SITUATED WITHIN THE NE 1/4, SEC. 2  
 T-2-N, R-4-E, 6 S.R.B.M. MARICOPA COUNTY, ARIZONA  
 LOTS 3, 4, 8, 14 TOGETHER WITH TRACT "B" AND LOTS 23, 24, 25, 26, 29,  
 30, 32, 33, 34, 35, 36 TOGETHER WITH TRACT "H" HAVE BEEN REVERSED  
 ON THIS AMENDED PLAN

### DEDICATION

STATE OF ARIZONA  
 COUNTY OF MARICOPA

I, the undersigned, being a duly qualified and authorized officer of the County of Maricopa, Arizona, do hereby certify that the following is a true and correct copy of the original as recorded in the office of the County Clerk of Maricopa County, Arizona, on this 15th day of August, 1972.

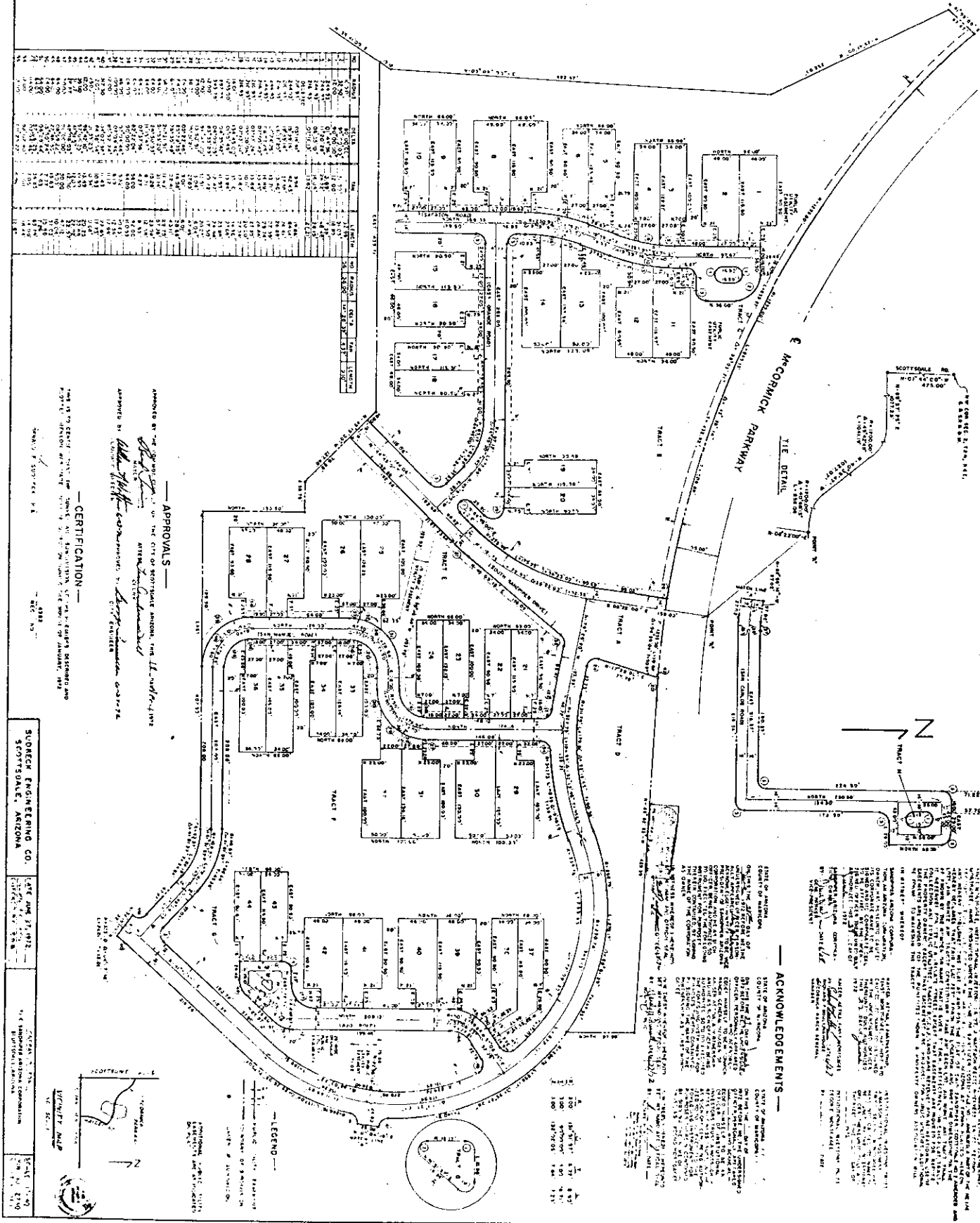
*[Signature]*  
 County Clerk

STATE OF ARIZONA  
 COUNTY OF MARICOPA  
 I, the undersigned, being a duly qualified and authorized officer of the County of Maricopa, Arizona, do hereby certify that the following is a true and correct copy of the original as recorded in the office of the County Clerk of Maricopa County, Arizona, on this 15th day of August, 1972.

STATE OF ARIZONA  
 COUNTY OF MARICOPA  
 I, the undersigned, being a duly qualified and authorized officer of the County of Maricopa, Arizona, do hereby certify that the following is a true and correct copy of the original as recorded in the office of the County Clerk of Maricopa County, Arizona, on this 15th day of August, 1972.

### ACKNOWLEDGEMENTS

STATE OF ARIZONA  
 COUNTY OF MARICOPA  
 I, the undersigned, being a duly qualified and authorized officer of the County of Maricopa, Arizona, do hereby certify that the following is a true and correct copy of the original as recorded in the office of the County Clerk of Maricopa County, Arizona, on this 15th day of August, 1972.



TRACT	LOT	AREA	OWNER	REMARKS
TRACT A	1	0.10	...	...
	2	0.10	...	...
	3	0.10	...	...
	4	0.10	...	...
	5	0.10	...	...
	6	0.10	...	...
	7	0.10	...	...
	8	0.10	...	...
	9	0.10	...	...
	10	0.10	...	...
TRACT B	11	0.10	...	...
	12	0.10	...	...
	13	0.10	...	...
	14	0.10	...	...
	15	0.10	...	...
	16	0.10	...	...
	17	0.10	...	...
	18	0.10	...	...
	19	0.10	...	...
	20	0.10	...	...
TRACT C	21	0.10	...	...
	22	0.10	...	...
	23	0.10	...	...
	24	0.10	...	...
	25	0.10	...	...
	26	0.10	...	...
	27	0.10	...	...
	28	0.10	...	...
	29	0.10	...	...
	30	0.10	...	...
TRACT D	31	0.10	...	...
	32	0.10	...	...
	33	0.10	...	...
	34	0.10	...	...
	35	0.10	...	...
	36	0.10	...	...
	37	0.10	...	...
	38	0.10	...	...
	39	0.10	...	...
	40	0.10	...	...
TRACT E	41	0.10	...	...
	42	0.10	...	...
	43	0.10	...	...
	44	0.10	...	...
	45	0.10	...	...
	46	0.10	...	...
	47	0.10	...	...
	48	0.10	...	...
	49	0.10	...	...
	50	0.10	...	...

**APPROVALS**

APPROVED BY THE CITY OF SCOTTSDALE, ARIZONA, THE *[Signature]*  
 ATTORNEY *[Signature]*

APPROVED BY *[Signature]*  
 COUNTY CLERK

**CERTIFICATION**

I, the undersigned, being a duly qualified and authorized officer of the County of Maricopa, Arizona, do hereby certify that the following is a true and correct copy of the original as recorded in the office of the County Clerk of Maricopa County, Arizona, on this 15th day of August, 1972.

- 2388 -  
 REC. 5/3

SUDORF ENGINEERING CO.  
 SCOTTSDALE, ARIZONA

DATE: AUG 27, 1972

SCALE: 1" = 40'